

## Earth/Environmental Science Homework & Test Review

**Week 5: May 4<sup>th</sup> – May, 8<sup>th</sup>, 2015**

**DUE DATE: Friday, May 8<sup>th</sup>**

**Weekly Reminders Checklist:**

- Test on Thursday, May 7<sup>th</sup>.

**Study:** Homework 4; Homework 5; article questions on *Causes of Declining Biodiversity*; Biome Map & Tables; Ocean Acidification Lab; Ocean Abiotic Factors Activity; Planet Earth – Seasonal Forests movie guide

- Have you checked PowerSchool to see if you have any missing assignments? Progress Reports go out on Friday!

**Vocabulary:** Fill in the missing areas on the table below using your textbook, class activities and any other resources you find helpful.

Vocabulary Word	Definition	Example/Application
Ecological Niche		
Invasive Species		
Endangered Species		
Endangered Species Act of 1973		
Carrying Capacity		<b>See Graphs on Back Page</b>
Overpopulate		

**Key Questions from the Week:** Answer the questions below pertaining to this week.

**1. List the effects of invasive nonnative species (plant and animal) on an ecosystem.**

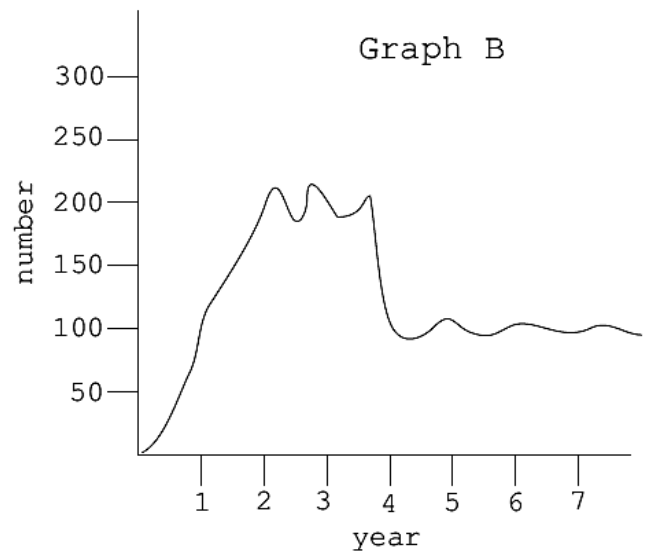
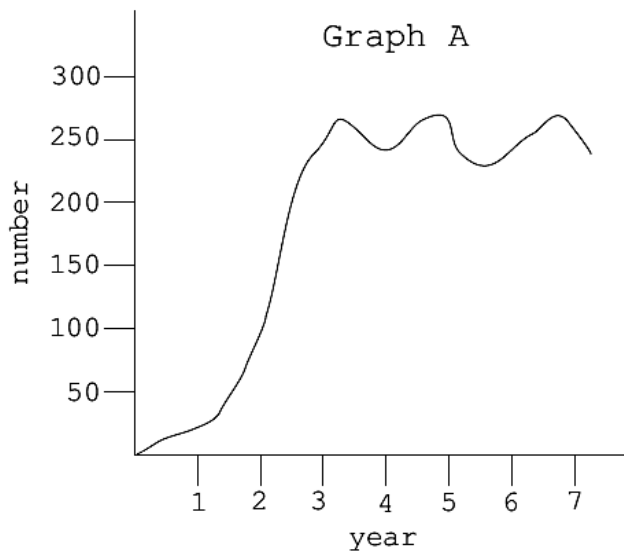
**2. What are three factors that the carrying capacity of an ecosystem depends on?**

1	
2	
3	

**3. Describe the activity and explain the effects on various plant and animal species:**

Activity	Description & Effect
Human Population Growth	
Habitat Alteration or Destruction	
Overharvesting	

**Graphs from the Week:** Answer the questions below pertaining to the following graphs on carrying capacity.



**4. For Graph A:**

- What is the approximate carrying capacity?
- Approximately during which year did this population reach the carrying capacity of its ecosystem?
- About how many years did it stay at the carrying capacity?

**5. For Graph B:**

- What are the carrying capacities of this graph?
- How many years did this population spend at the first carrying capacity?
- During which year did it reach the next carrying capacity?
- Which carrying capacity is more stable? Why do you think so?

**Research Question for the Week:** Conduct research using the library and internet resources to answer the following question:

**6. Summarize two ways to mitigate human impact on the biosphere.**